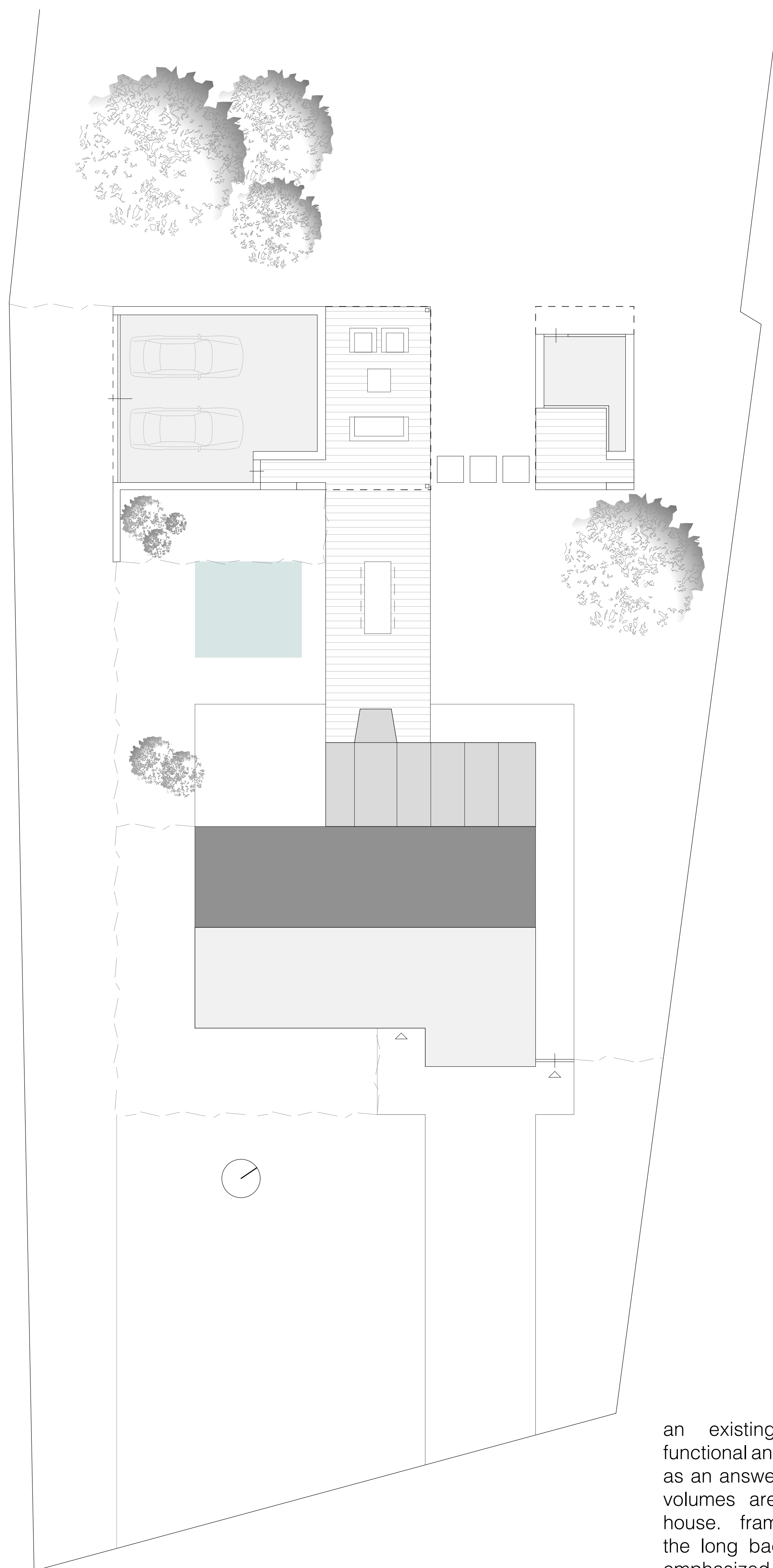


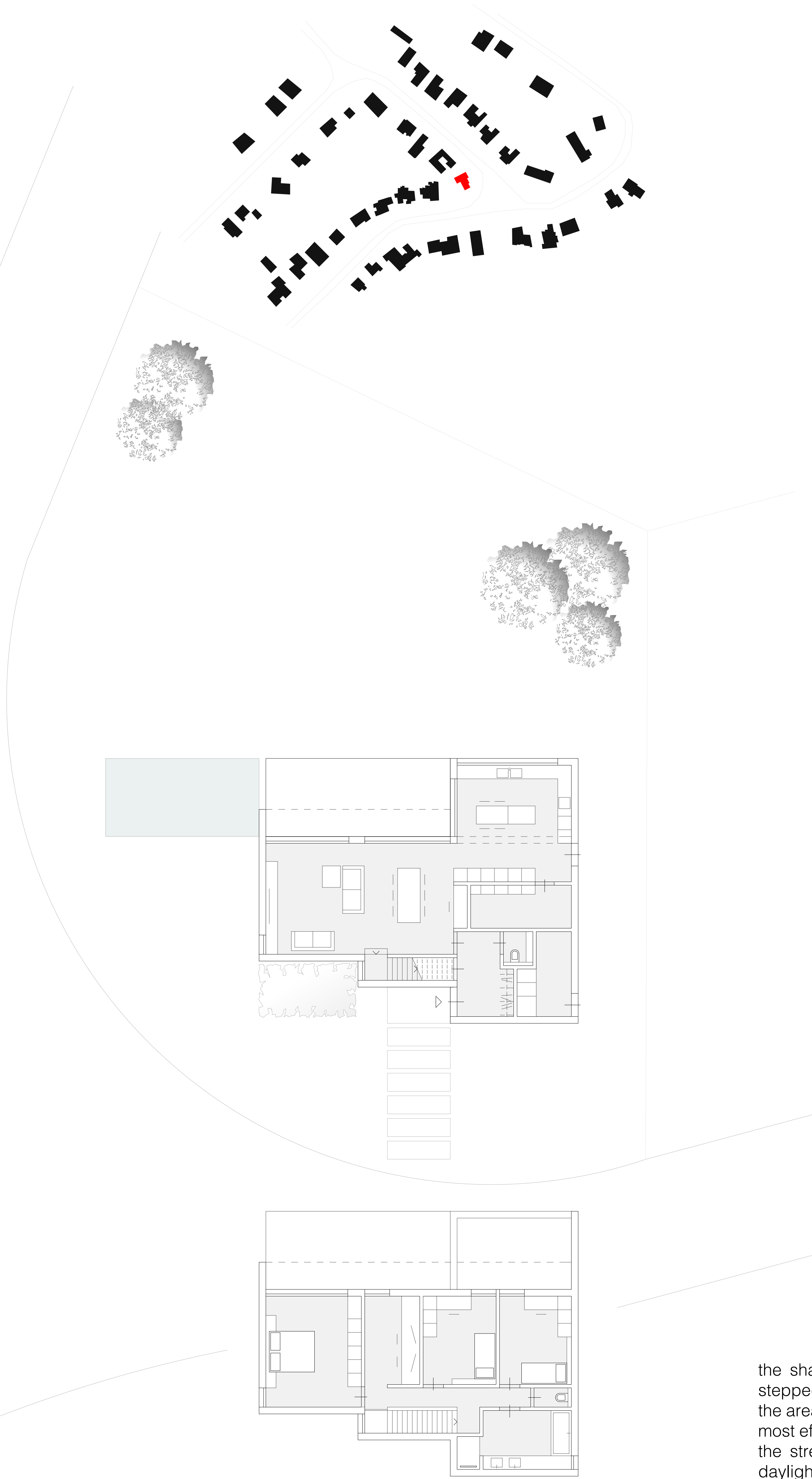
work



an existing house needs a functional and life quality extension. as an answer to this question, two volumes are placed behind the house. framing the wide view to the long back yard results in an emphasized view throughout the gap in between from the dwellings living spaces.

pavilion r/d

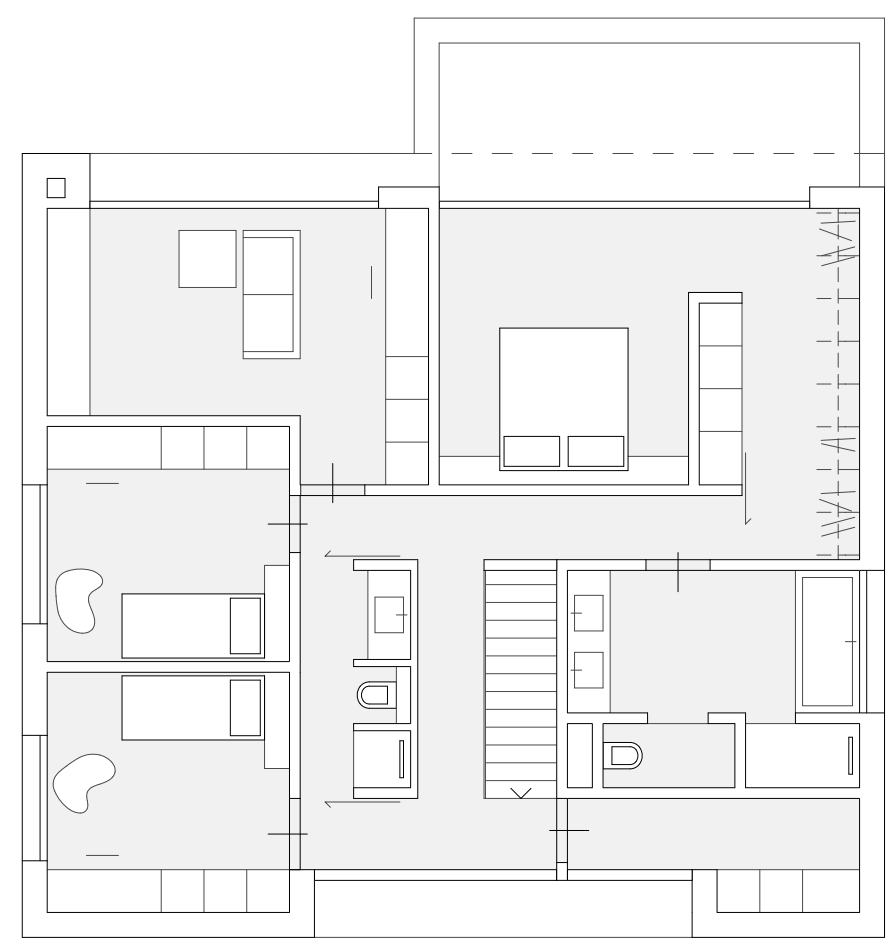
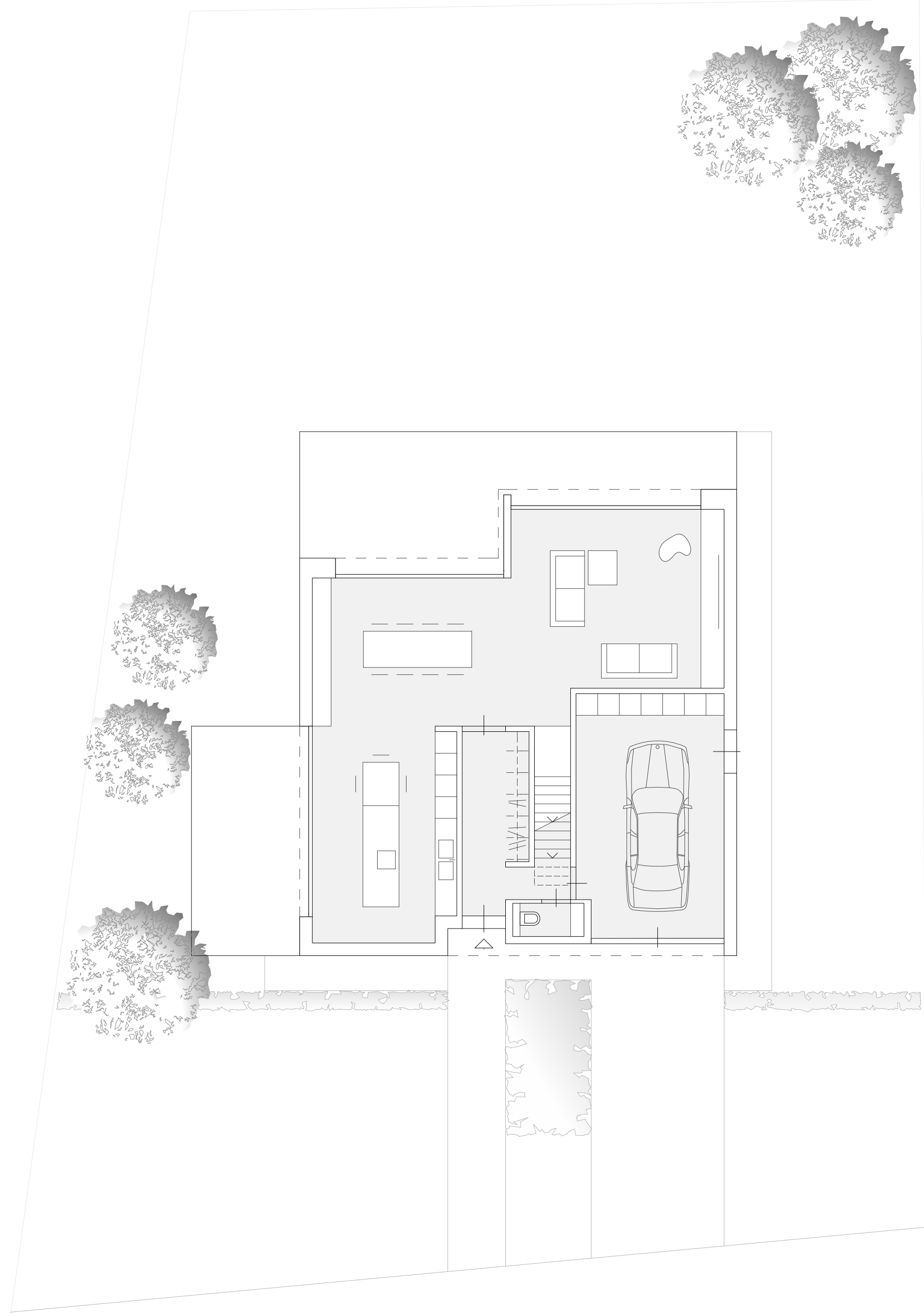
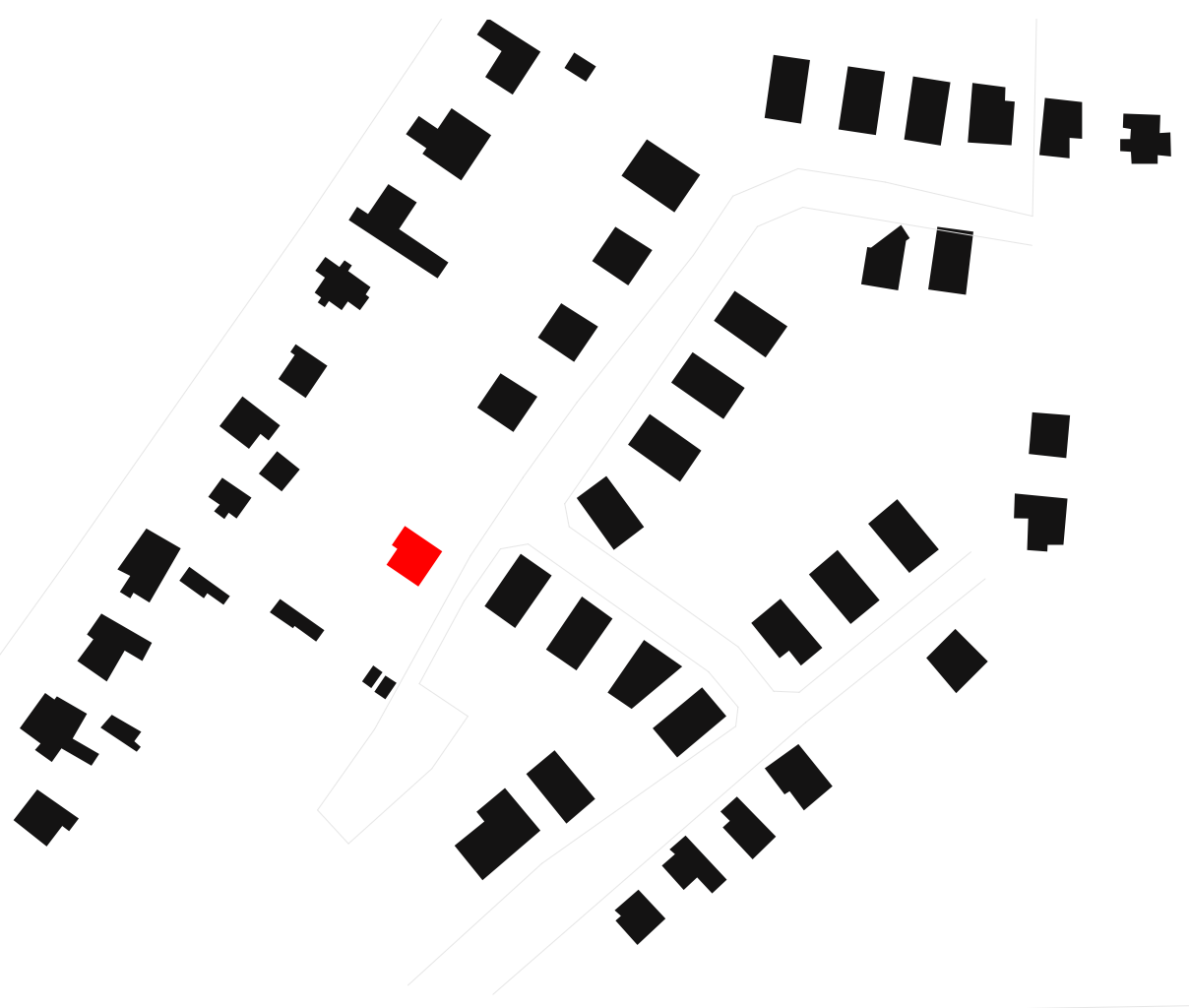




the shape of the plot defines the stepped shape of the house. so the area of the garden is used in its most efficient way. privacy towards the street, openness and a lot of daylight towards the garden.

house f/i

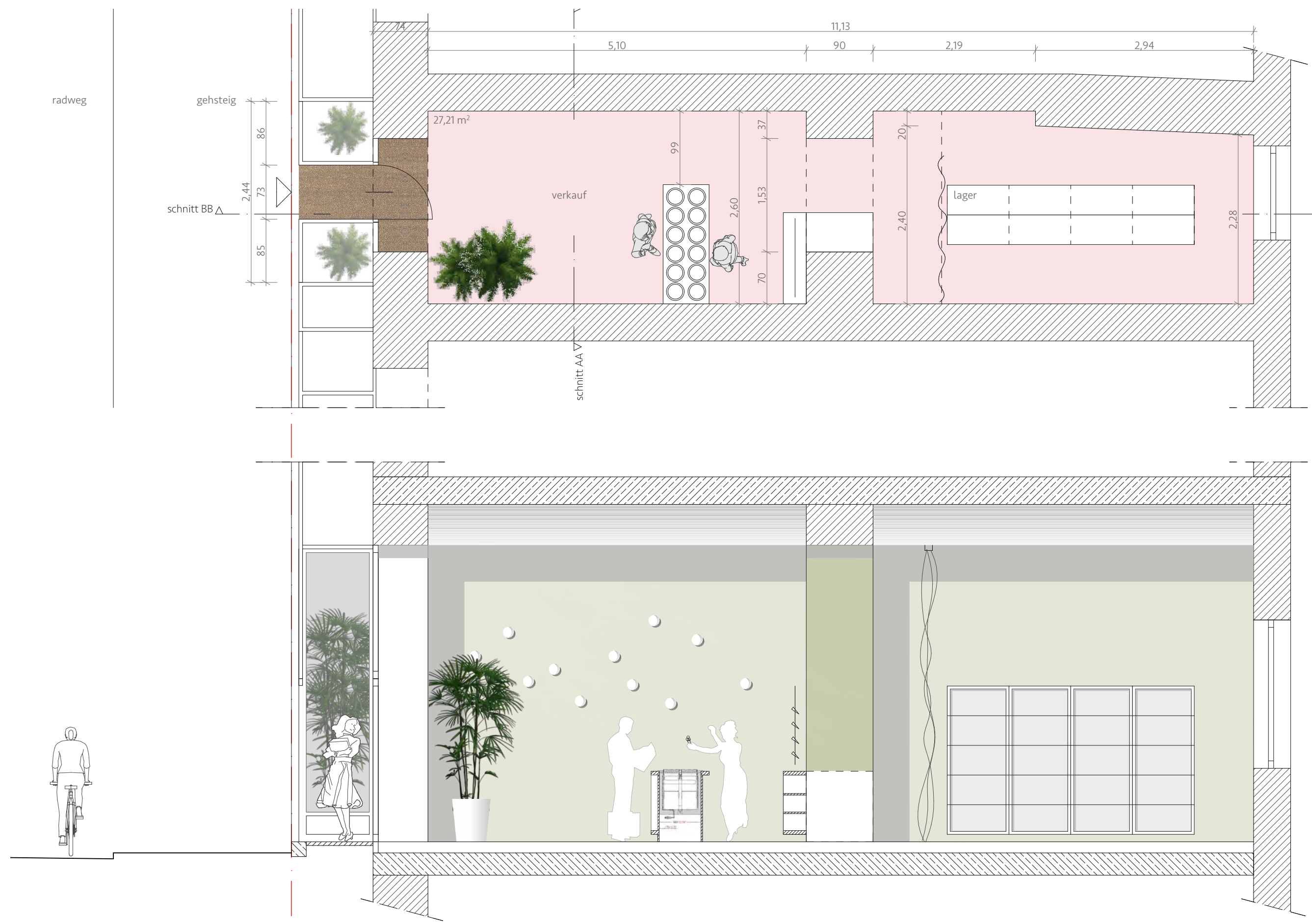




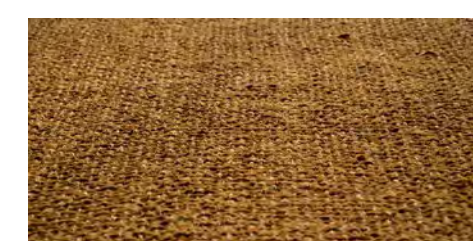
a clearly shaped volume, a use of natural materials with a pureness. a lot of daylight and open flexible living spaces on the ground floor. apart from the owners sleeping and sanitary area, the upstairs area offers extra rooms to lodge friends and family members.

house d/m





kugelleuchte - glas weiß



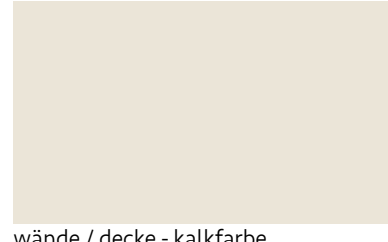
boden eingangsbereich - fussabstreifer kokos



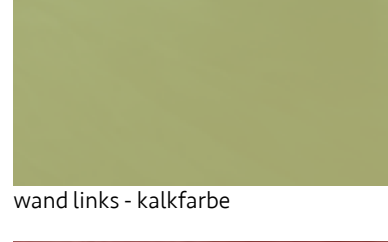
farbkonzept:
basis majolikahaus otto wagner



raumtrennung - leinen
vorhang (transluzent)



wände / decke - kalkfarbe



wand links - kalkfarbe



boden - mineralische spachtelboden
auf bezaendestrich
bspw. brillux spicy 27 FM.06




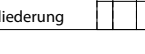
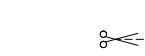





a corridor-like space in a historical otto wagner building gets a new function as an ice cream shop. the colour concept of the shop is derived from the colours of the splendid viennese jugendstil-facade. the playful design fits well into the vibrating and famous "naschmarkt" around.

eiskarusell

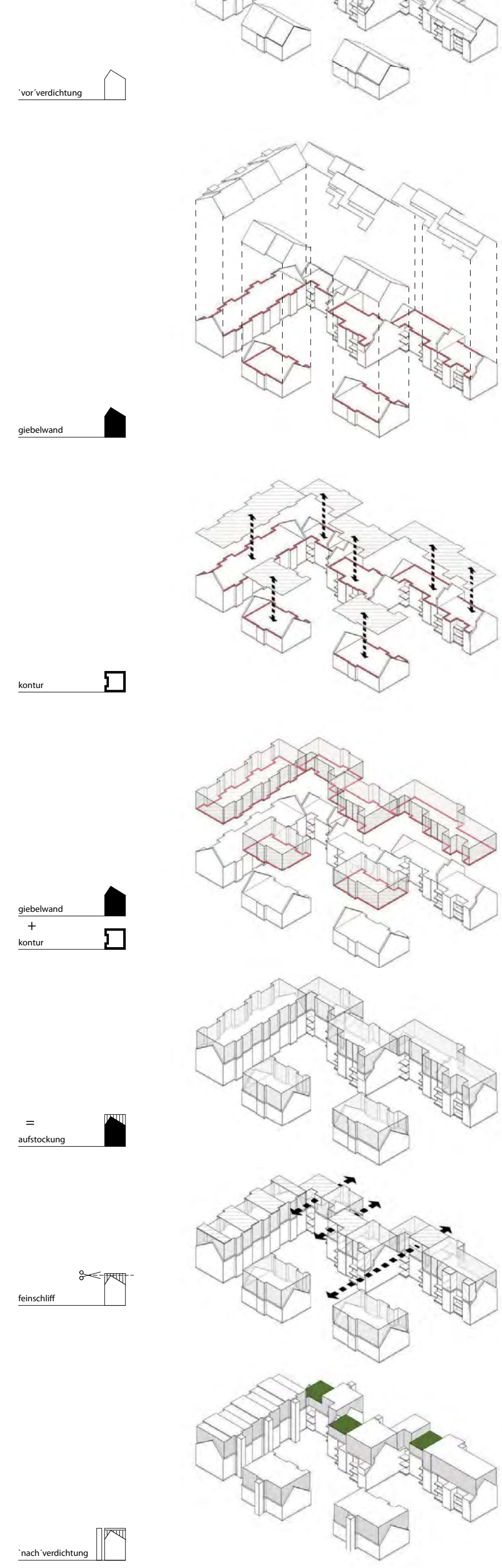




RULES

-  abbruch nur da wo notwendig (dach bestand, tür- & fensteröffnungen)
-  bestandsilhouette - stirnseitige giebelschalen bleiben sichtbar
-  bestandskontur als äußere grenze, darf nicht überschritten werden
-  vertikale gliederung in der aufstockung sichtbar durch bestandskontur
-  alludieren auf bestand
-  bestandsilhouette - alludieren auf bestandsrhythmus mit höhenrhythmus
-  bestandsdach - vertikaler holzdachstuhl mit bestandsdachsparren
-  verziehung bestand & neu
-  dachsparren und begrünung
-  aufstockung - lift - neugebäude

WORK



SNITTANSICHT WEST - hof 1:200



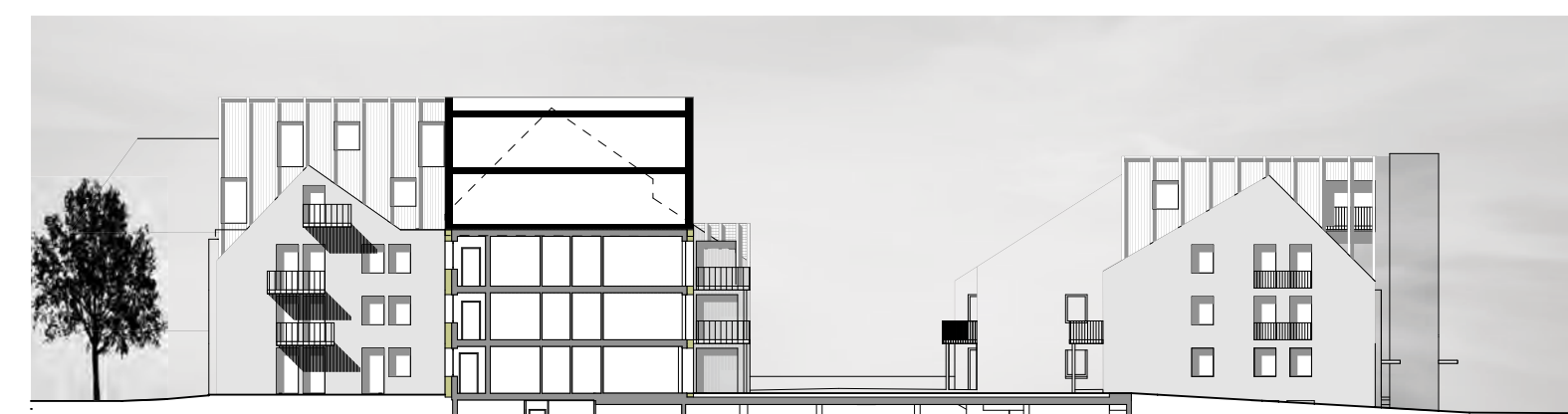
OSTANSICHT - inhauserstraße 1:200



WESTANSICHT - bahnsseitig 1:200



SÜDANSICHT - blumastraße 1:200



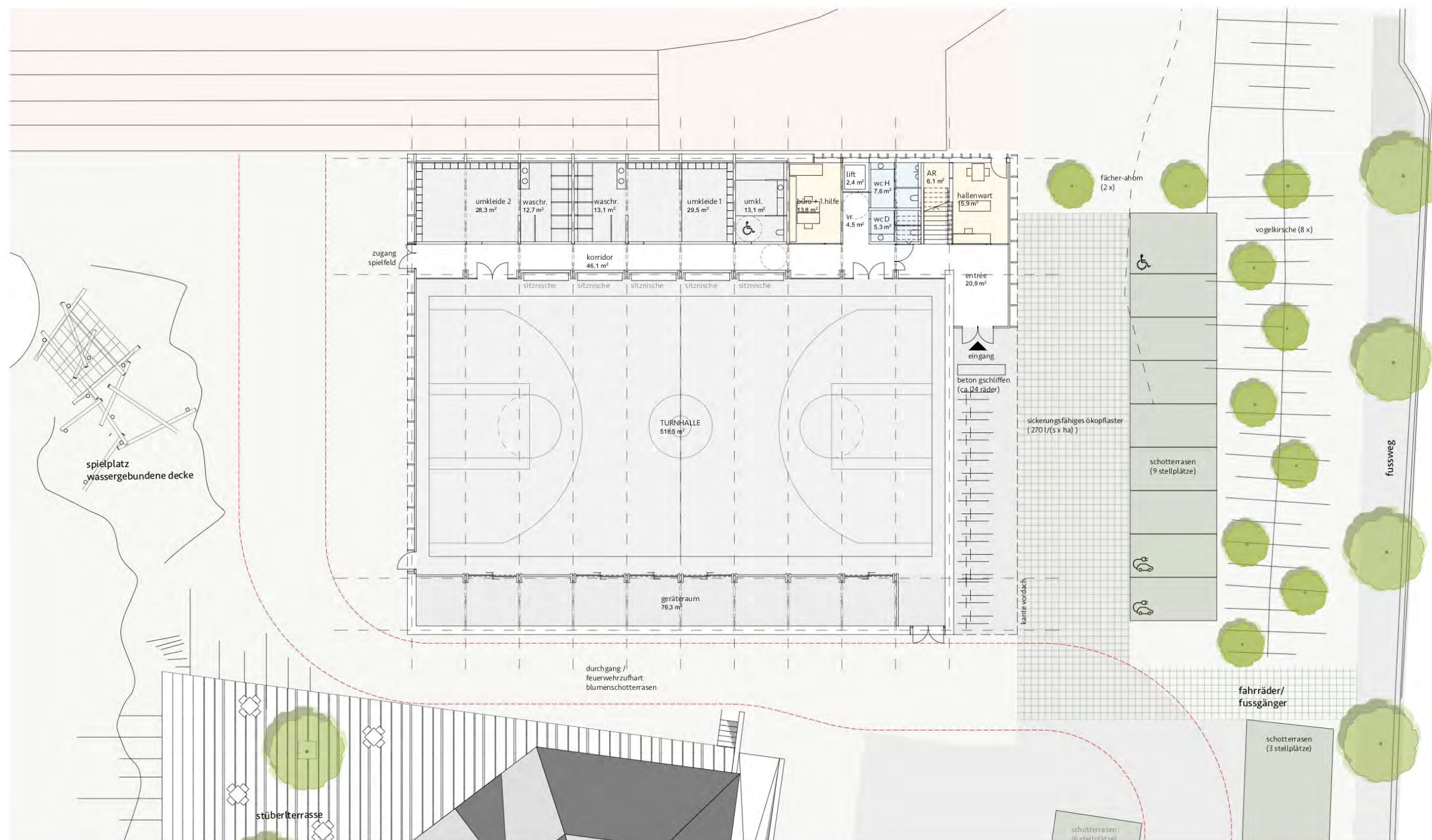
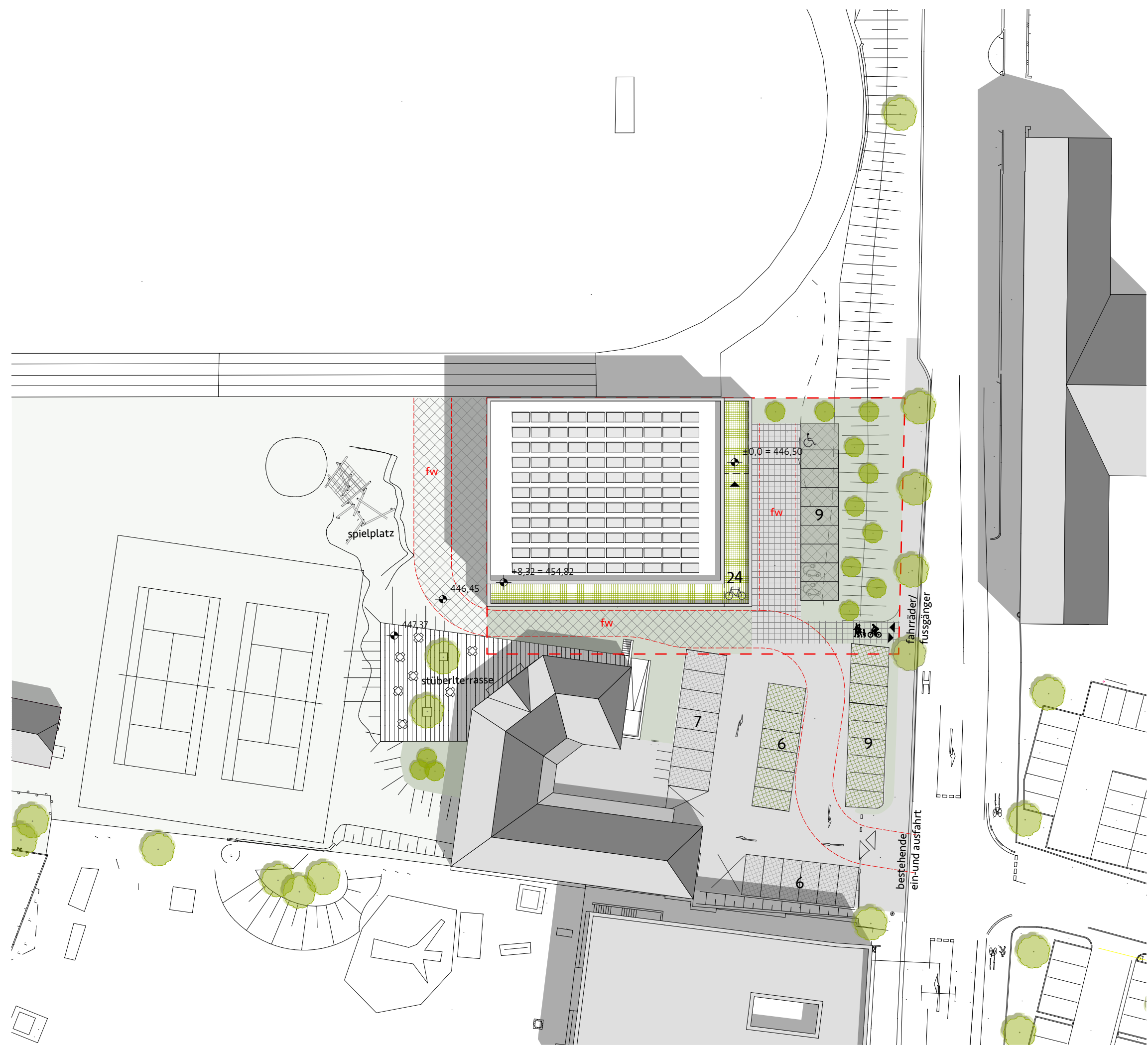
SNITTANSICHT SÜD - hof 1:200

a social housing complex from the mid-eighties in salzburg with 75 units gets 24 extra units. the concept: reuse, add and wrap. the goal: achieving a zero carbon refurbishment. less carbon, less cars. the new basement contains over 300 bikes. bus and train stations are nearby. the design refers to the existing saddle roofs, wooden boxes and concrete elevator towers are added.

inhauser

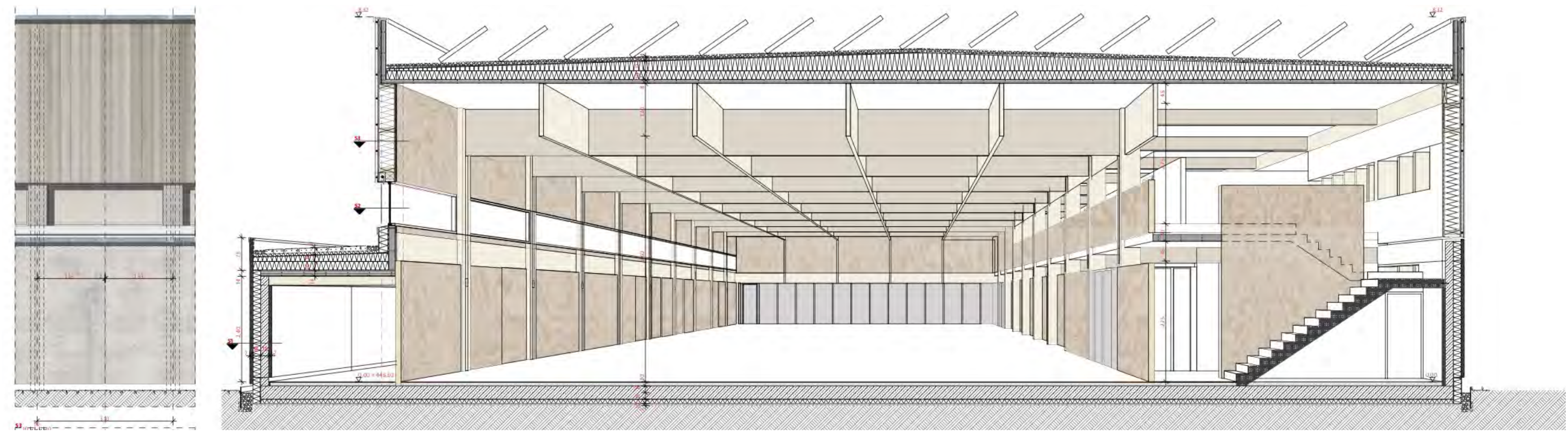
subcontracting for
cs-architektur zt gmbh - salzburg

under construction 2018-2021
salzburg (A)

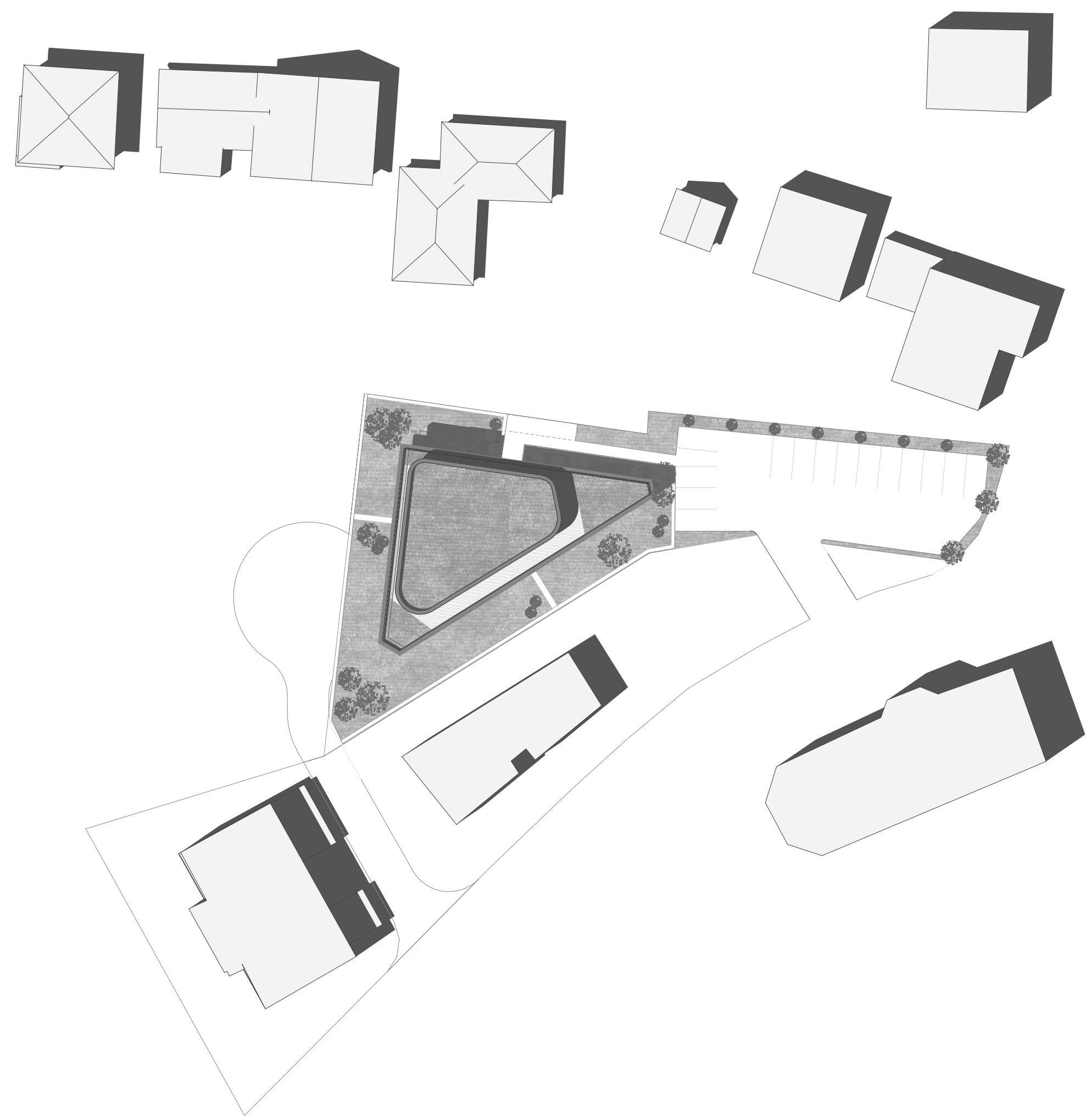


EU-open competition in klagenfurt city for a new gym hall - a climate active concept with a maximized wood usage and a minimized concrete usage. the roof structure is a crossed wood rib system which permits long span lengths and a rigid but light weight ensemble. the materials are as much a possible natural and sustainable. the paved area has a high permeability to avoid drought in the soil.

gym hall



contribution not realized 2021
klagenfurt (A)



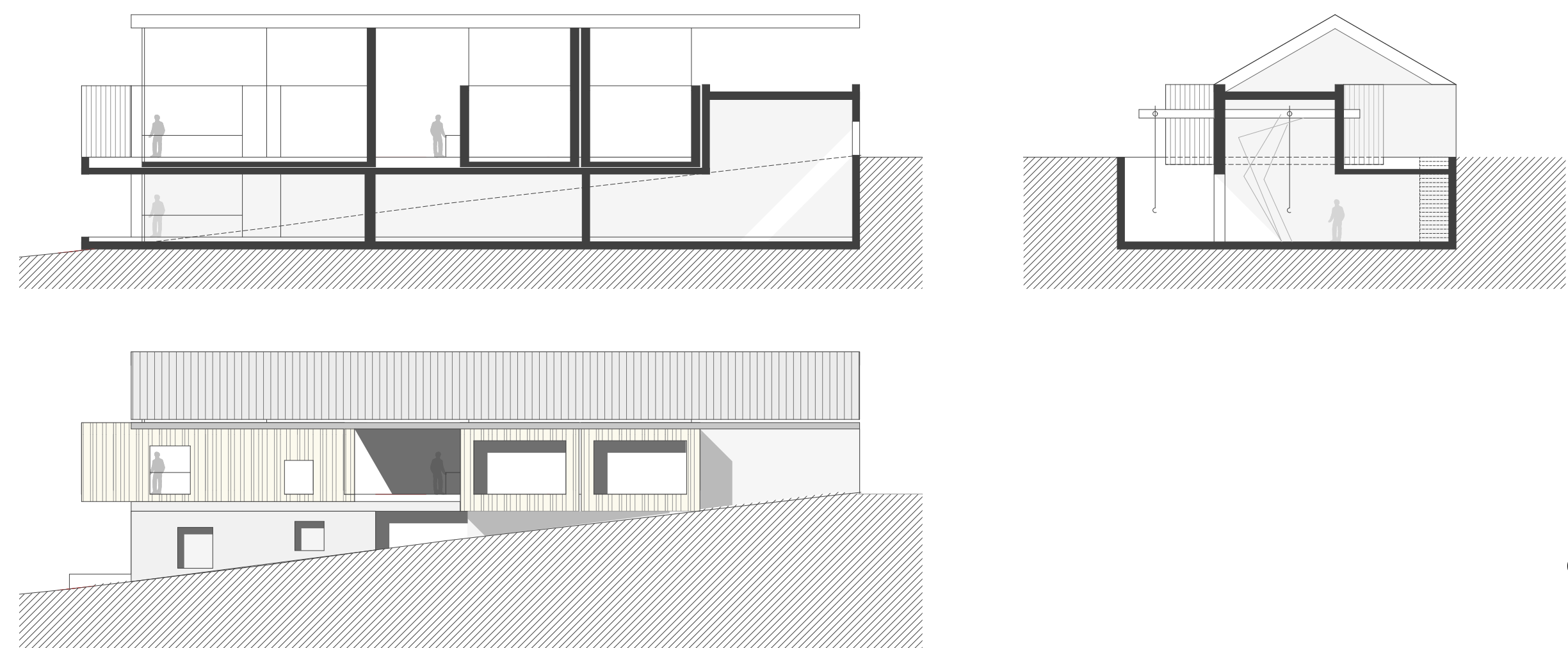
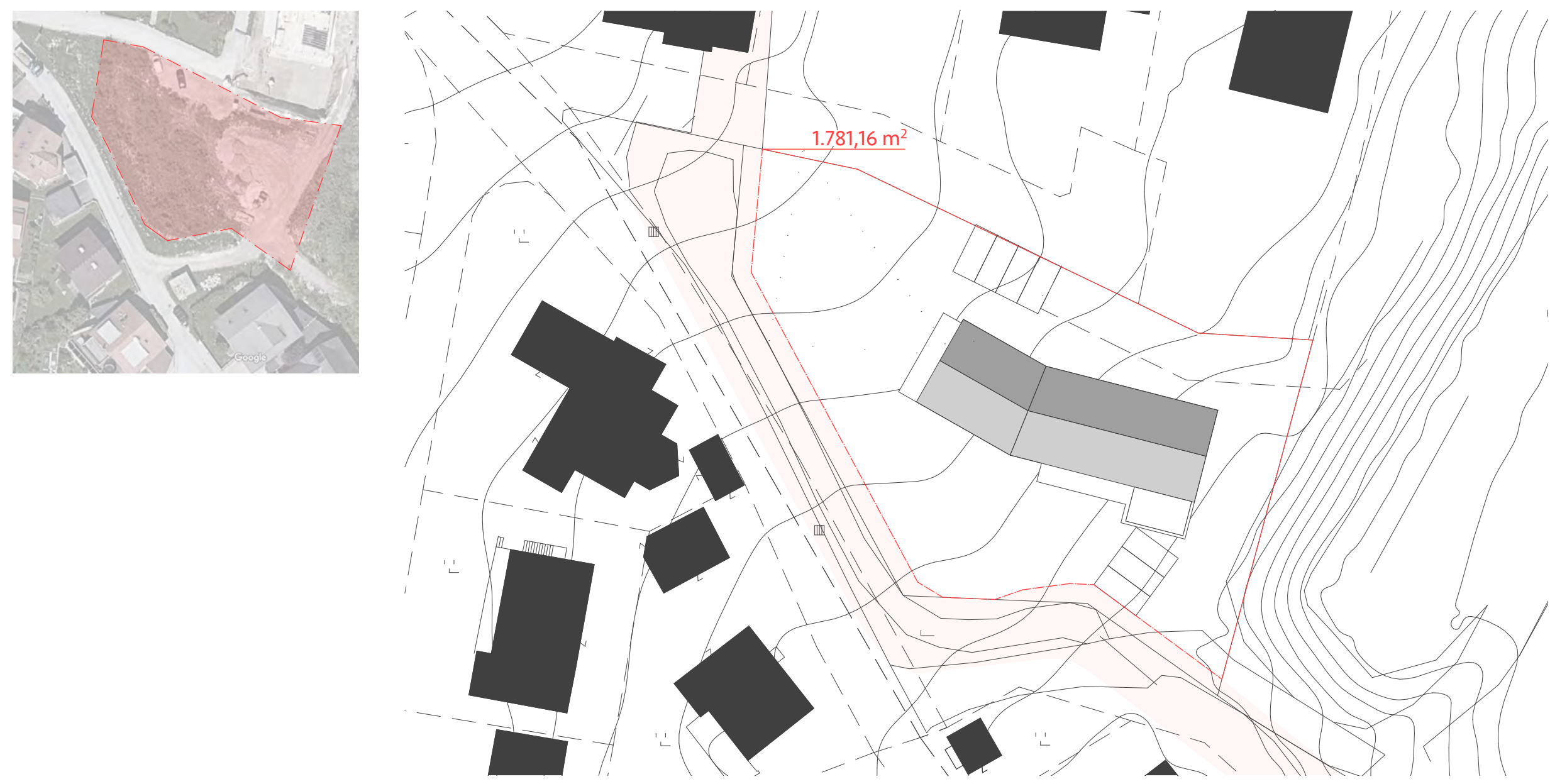
closed competition - first prize.
 7 residential units on a complex triangular plot nearby salzburg.
 the concept: concrete slabs with wooden walls define an elegant but rough character. by defining first the outdoor spaces, the ground plan areas were clearly shaped. an efficient way of organising the flats with a maximum of open and spatial feeling.
 the goal: making the monumental surroundings with the untersberg perceptible in the living areas.

rif

in cooperation with
 cs-architektur zt gmbh - salzburg

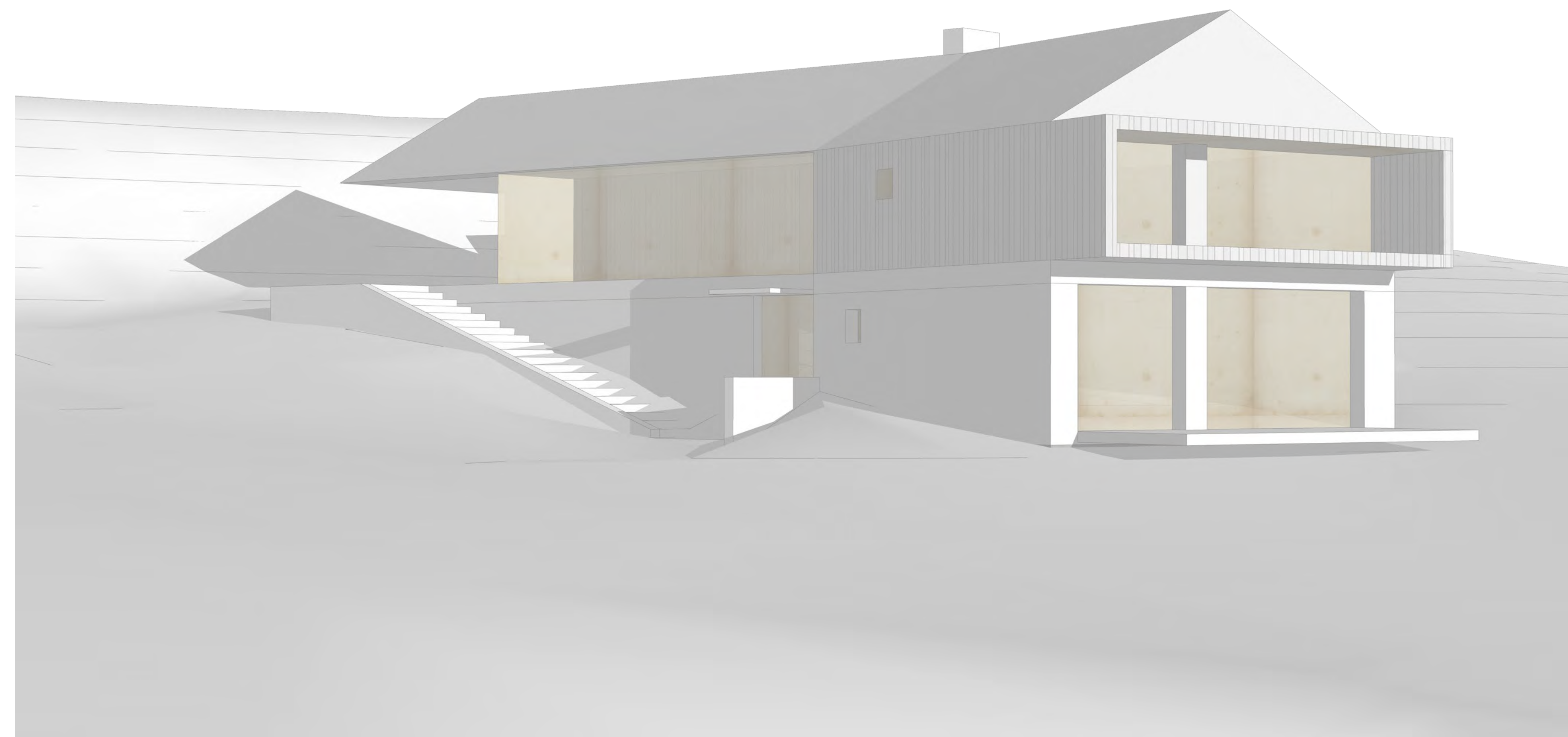
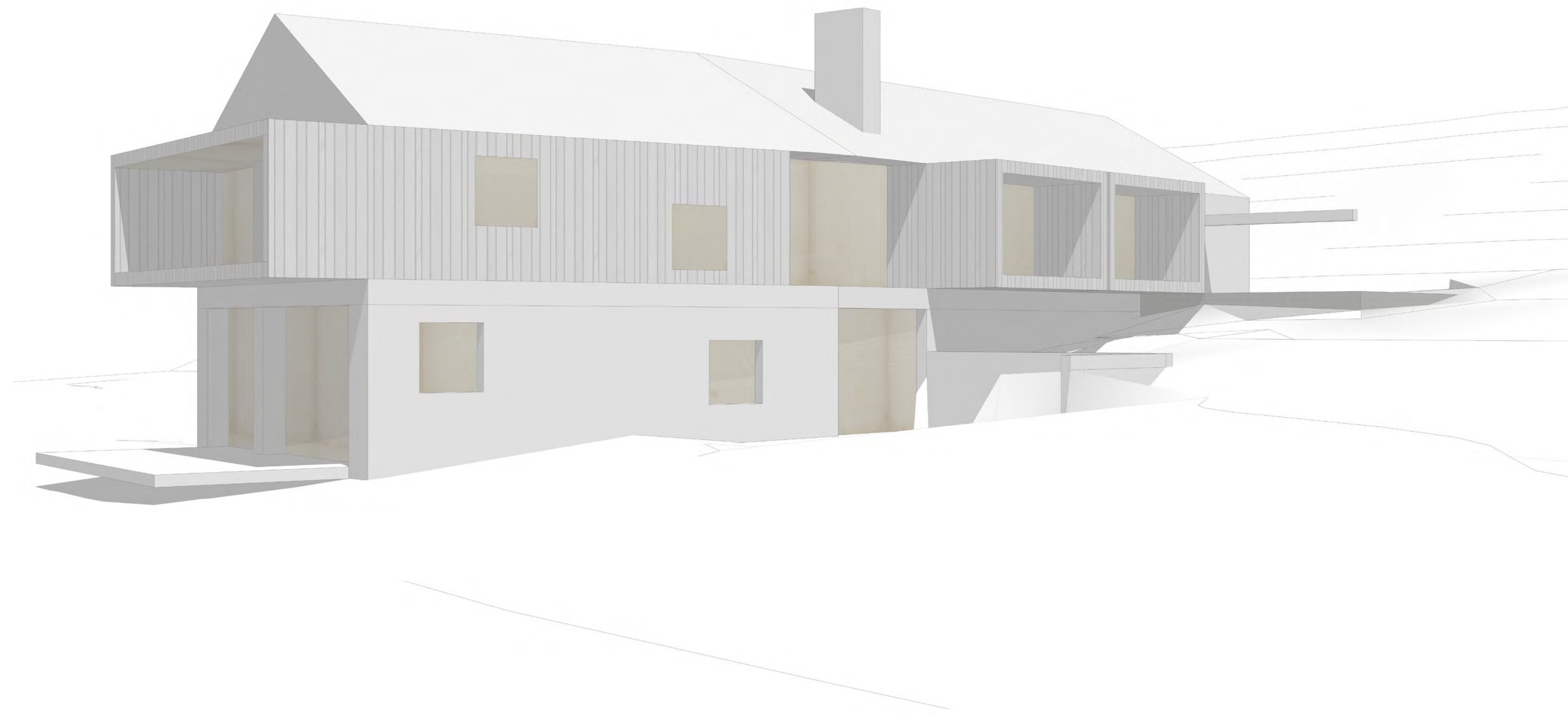


closed competition - in development - 2021
 rif - salzburg (A)



case study for two flats, two guest rooms, a yoga studio and an artist atelier on a slope close to salzburg. the concept: a concrete base, wooden boxes, precisely defined openings and a saddle roof. the goal: a rural and contemporary character, low-tech-building, high comfort.

the barn





© degregorio & partners

hasselt
2005/
2006

degregorio & partners /
hasselt, belgium
traineeship



© atelier karl langer



© mühlbacher-marschalek

vienna
2007

atelier karl langer /
vienna, austria
traineeship

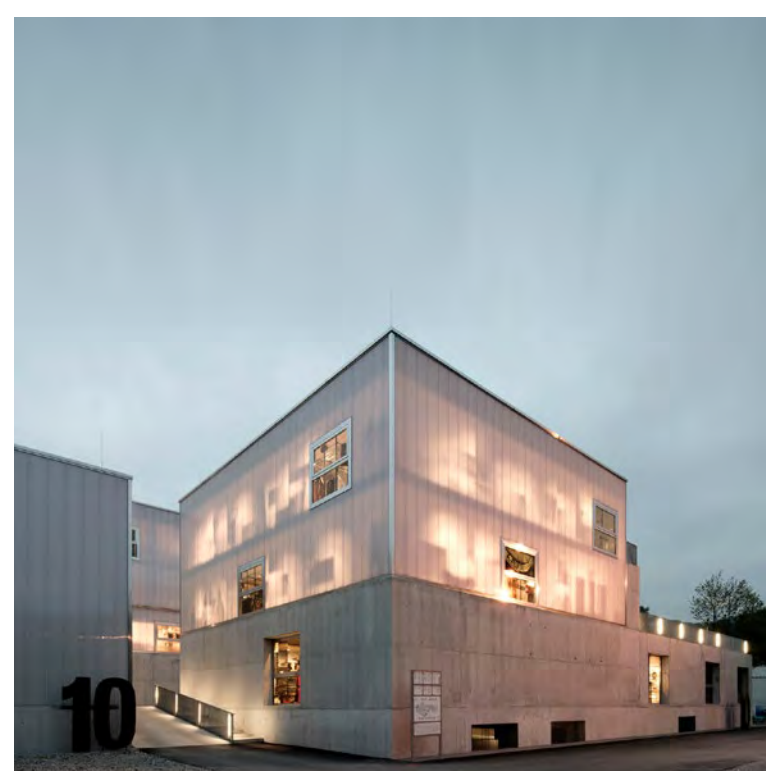
arch. mühlbacher-marschalek /
vienna, austria
traineeship

france/
belgium
2008 /
2010



bubbe architecten /
antwerp, belgium
team architect

baiert & demmelhuber /
töging a. inn, germany,
project coordinator
retail projects northern france



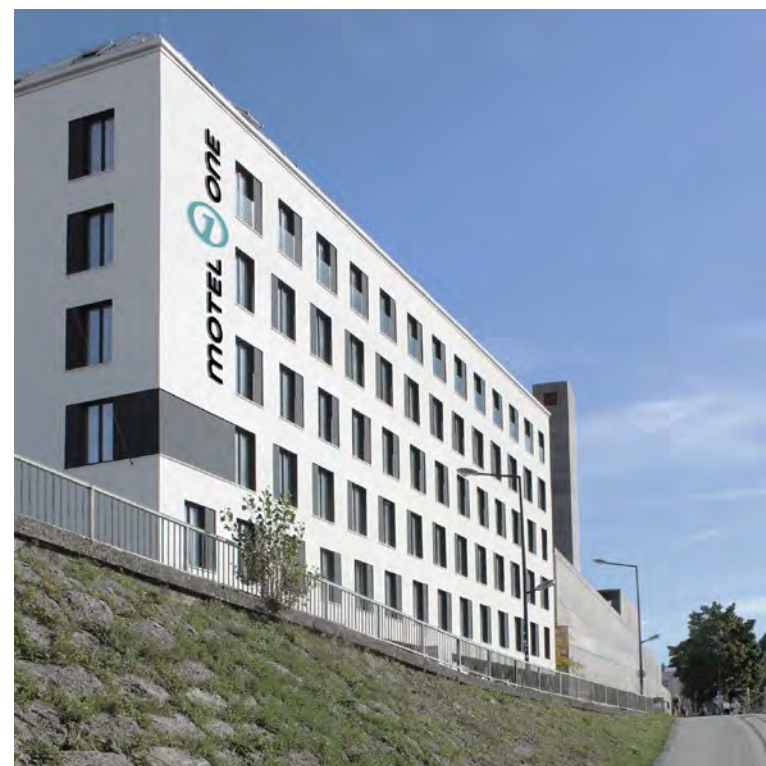
© cs-architektur / wortmeyer



© cs-architektur



© cs-architektur



© cs-architektur



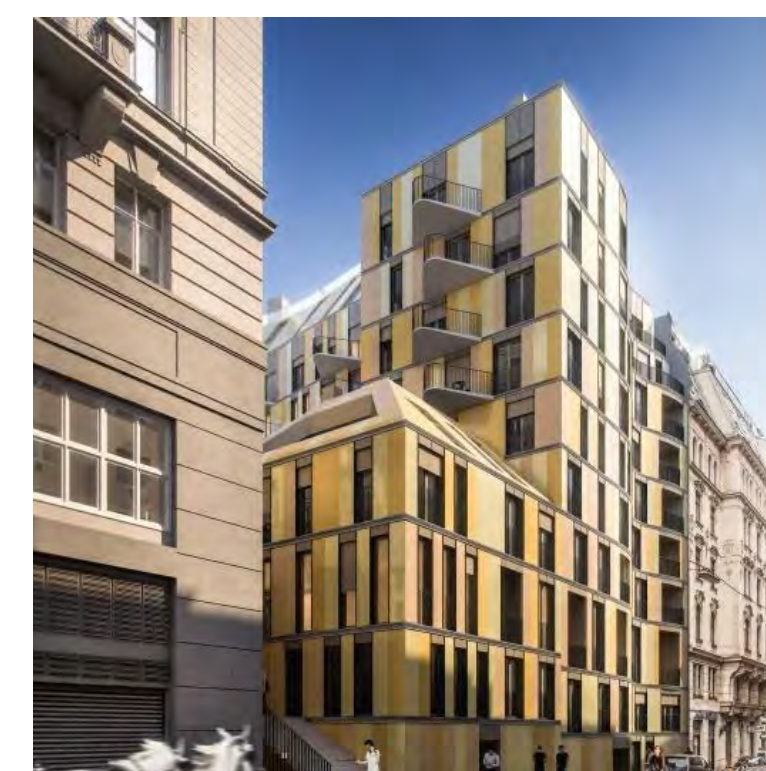
© cs-architektur



© cs-architektur

salzburg
2010 /
2016

cs-architektur
arch. christoph scheithauer /
salzburg, austria
project architect



© jp immobilien

vienna
2016

malek herbst
architekten zt gmbh /
vienna, austria
team architect, execution



© sps architekten

thalgau
2017

sps architekten zt gmbh /
thalgau, austria
project architect

stijn nagels
architecture atelier
architect

salzburg
2018 /...